



The Eldership

What Should the Eldership Do in Practice ?

Lesson 2

Family Builder's Class

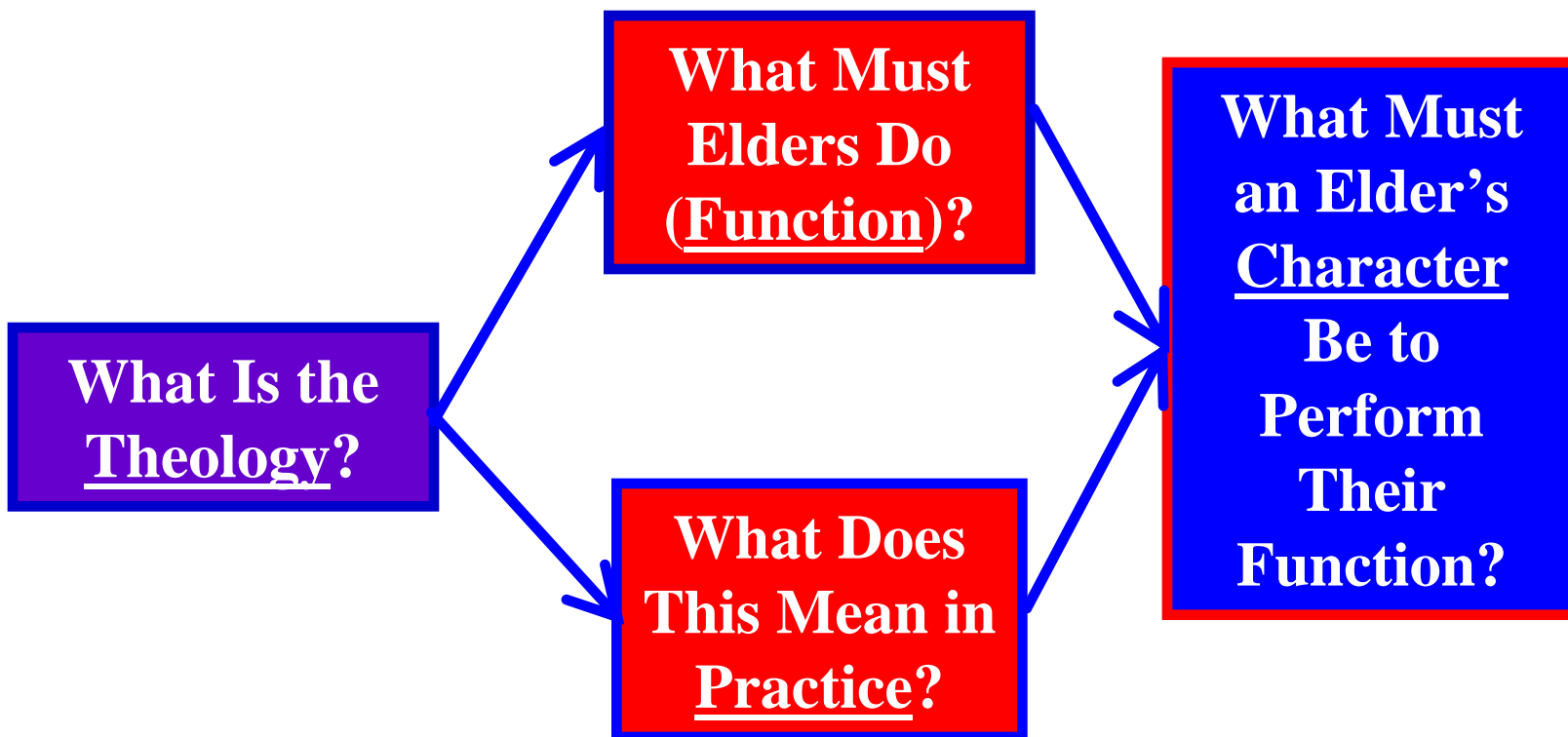
By: Lynn S. Nored

Copyright by Lynn S. Nored. No part of this publication may be reproduced, stored in a retrieval system, or transmitted in any form by any means, electronic, mechanical, photocopying, recording, or otherwise without the prior consent of the author.

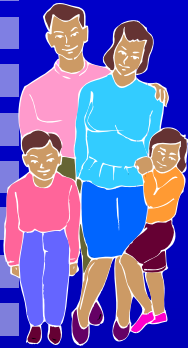


The Eldership

What Are It's Names?



Summary of Part 1



■ Names

- Called “elders” 16 times (older, mature person)
- Called “overseers” 5 times (see things are done right by others)
- Called Shepherds 1 time (caretaker of flock)
- Called leader 1 time (to be a leader, to rule)

■ Biblical Functions

- Shepherding Functions
- Leadership Functions

■ Theological Imperatives (God and Christ as Shepherds)

- Leader; Provider; Spiritual Restorer; Guide; Protector; Comforter; Sacrificial; Reconciler; Unifier; Restorer; Relater

Summary of Functions

Shepherding Functions

Watch

Feed

Guard

Care For

Tend

Preach and Teach

Pray for

Anoint Sick

Leadership Functions

Promote Unity

Prepare for Service

Build up body

Direct the church

Exercise Oversight

Be Examples

Exhort

Refute Falsehood





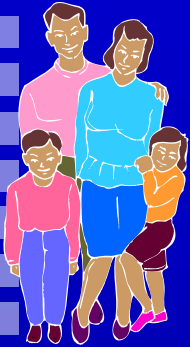
Servant Leadership!

Mk. 10:43 Not so with you. Instead, whoever wants to become great among you must be your servant, ⁴⁴and whoever wants to be first must be slave of all. ⁴⁵ For even the Son of Man did not come to be served, but to serve, and to give his life as a ransom for many.”

Workers; Doers

Equipping

Leaders as Servants



Summary

Tie Between Shepherding and Leadership

SACRIFICIAL SERVANT LEADERSHIP

Shepherding
Functions



Leadership
Functions

Elders are sacrificial servant leaders who use the Shepherding Metaphor as depicted by Christ and God to equip, guide, provide, protect, care, comfort, and spiritually nourish the church.



What Do Elders Do? (Function)

Eph. 4:3 Make every effort to keep the unity of the Spirit through the bond of peace.... 12 to prepare God's people for works of service, so that the body of Christ may be built up 13 until we all reach unity in the faith and in the knowledge of the Son of God and become mature, attaining to the whole measure of the fullness of Christ..

PROMOTE UNITY and MATURITY

TO PREPARE for SERVICE: Complete furnishing, equipping

TO BUILD UP THE BODY: Edify, Promote Growth.

Summary of Functions

SACRIFICIAL SERVANT LEADERSHIP



Preparing/ Equipping

- Feed
- Provide
- Tend
- Guide
- Preach and Teach
- Build up the Body
- Be Examples
- Exhort

Spiritual Guarding

- Watch
- Guard
- Protect
- Refute
Falsehood
- Reconcile
- Restore
- Pray

Oversight


- Exercise
Oversight
- Lead
- Direct the
church
- Promote
unity

Care

- Pray
and
Anoint
Sick
- Comfort

(Crisis)

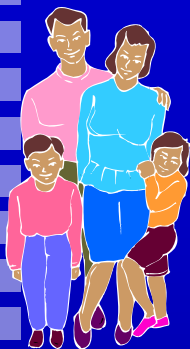
Equipping Your Spiritual Gifts



Eph. 4:7 But to each one of us grace has been given as Christ apportioned it. ⁸ This is why it says:

“When he ascended on high,
he led captives in his train
and gave gifts to men.”

I Pet. 4:10 As each one has received a *special* gift,
employ it in serving one another as good stewards of the
manifold grace of God.



Equipping for Service

Spiritual Gifts

Administration: I Cor. 12:28

Discernment: I Cor. 12:10

Encouragement: Rom. 12:8

Evangelism: Eph. 4:11

Giving: Rom. 12:8

Helping: I Cor. 12:28

Hospitality: I Peter 4:9

Intercessory Prayer: Eph. 6:18

Knowledge: I Cor. 12:8

Leadership: Rom. 12:8

Mercy: Rom. 12:8

Prophecy (proclaim truth) Rom. 12:6

Service: Rom. 12:7

Shepherding: Acts 20:28

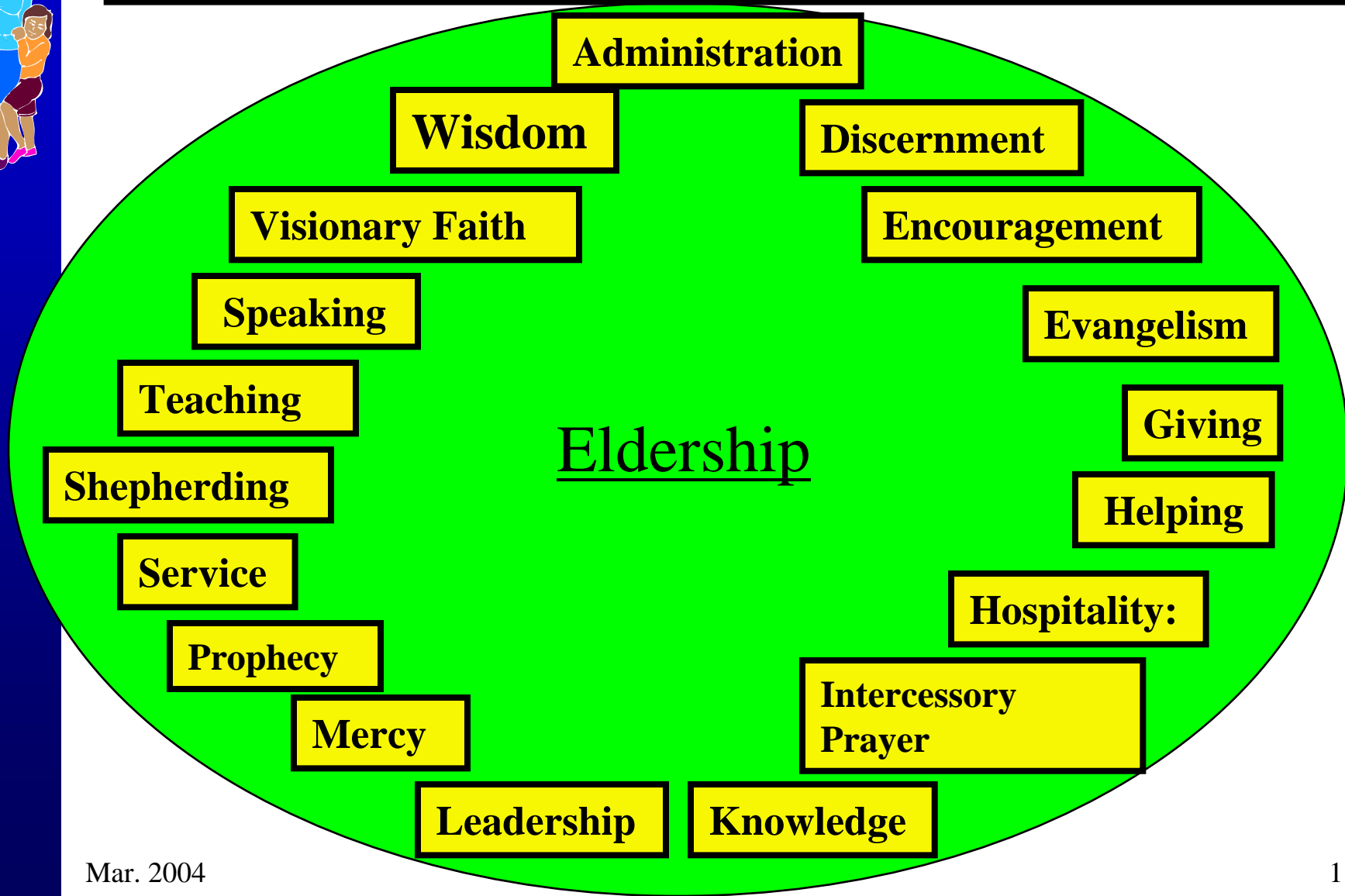
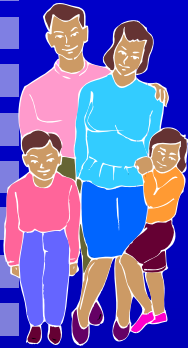
Teaching: Rom. 12:7

Speaking: I Peter 4:11

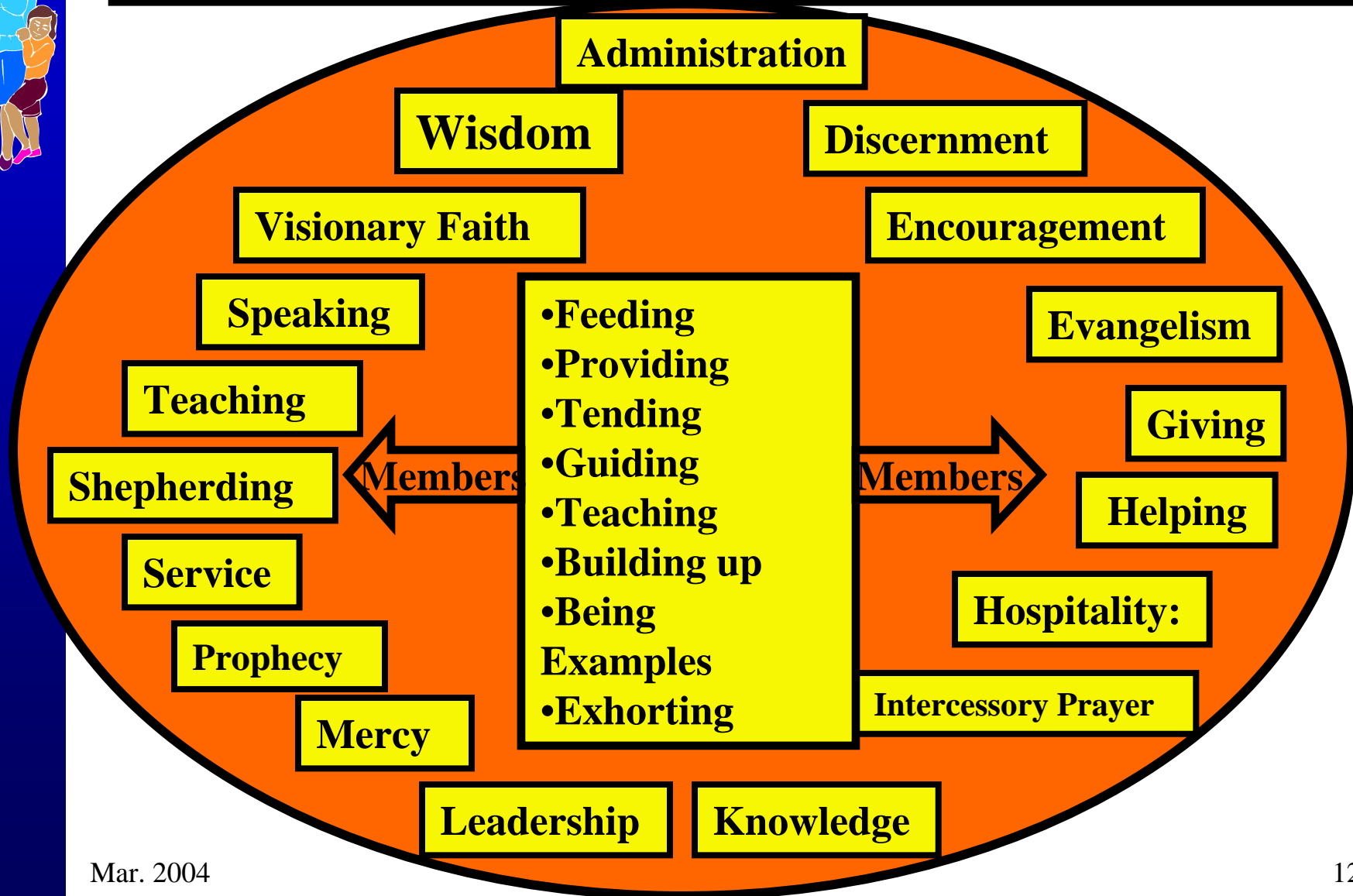
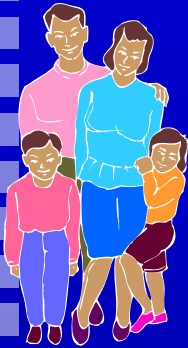
Visionary Faith: I Cor. 12:9

Wisdom: I Cor. 12:8

Spiritual Gifts and the Eldership



Preparing/Equipping Members



Preparing/Equipping Members Practical Actions



Celebrating Gifts of Service for the Glory of Christ

Encouraging Team Formation Using Complementary Gifts

Allowing for Experimentation

Providing non-Classroom Training for Sharpening Gifts

Providing Training in Particular Service Areas

Being Personal Mentors for Utilization of Gifts for Service

Providing Ministries/Leaders for Service Areas

Recruitment of Members to Utilize Their Gifts

Provision for Members to Discover Their Spiritual Gifts

Teaching/Identification of Spiritual Gifts and Relationship to Service

Spiritual Guarding



**Watch
Guard
Protect**

Ex.: Vetting of Teachers

**Refute
Falsehood**

**Ex.: One on One Teaching
Public Teaching**

Reconcile

**Ex. Provide One to One Mediation
Provide for Professional Counselor/ Mediator**

Restoration

Ex.: One on One Spiritual Teaching

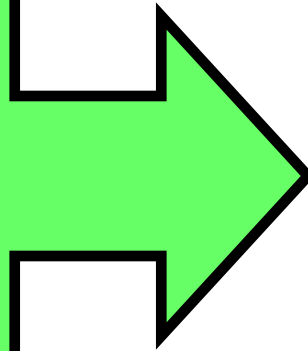
Prayer

Ex.: Eldership Prayers by Name

Oversight



- Exercise Oversight
- Lead
- Direct the church
- Promote unity

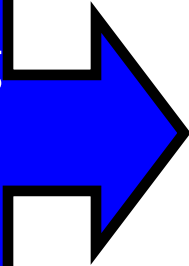


- Set strategy and direction
- Appoint deacons/ministry leaders to be responsible
- Hold themselves and ministry leaders accountable
- Lead and not micromanage
- See that efforts are unified appropriately

Caring

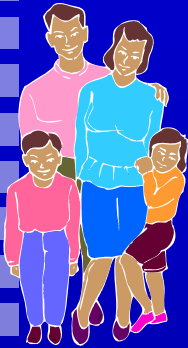


**Responding
To
Crisis**



- **Responding to requests for prayers (and anointment of oil)**
- **Visiting sick/accidents**
- **Attending funerals**
- **Personal counseling**

What Must an Elder's Character Be?



- Blameless/above reproach
- Husband of one wife
- Believing obedient children
- Temperate
- Respectable
- Able to Teach
- Not Quarrelsome
- Not overbearing
- Not quick tempered
- Not given to drunkenness
- Not violent
- Not pursuing dishonest gain

- Hospitable
- Not Violent
- Gentle
- Not lover of money
- Manage his own house well
- Not recent convert
- Loves what is good
- Self-controlled
- Hold to the message to encourage others and refute error
- Good reputation

What Must an Elder's Character Be?

Leadership Characteristics

Not Prone to Lord It Over

- Not Quarrelsome
- Not Overbearing
- Not Quick tempered
- Not violent

- Manage his own House well
- Self Controlled
- Believing obedient children
- Not recent convert

Reputation

- Not given to drunkenness
- Not pursuing dishonest gain
- Not lover of money
- Respectable
- Blameless/above reproach
- Husband of one wife

Shepherding Characteristics

- Temperate
- Gentle
- Loves What is Good
- Apt to teach



Elders: SACRIFICIAL SERVANT LEADERS



Use Shepherding Theology Metaphor

Prepare and Equip

Members to
Use Spiritual
Gifts
For
Works
Of
Service

Spiritual Guard

Members
Souls

Against
False
Doctrine

Provide Oversight

Set Direction

Hold
Themselves
And
Members
Accountable

Care
For

Respond
to Crisis
With
Prayer
And
Comfort